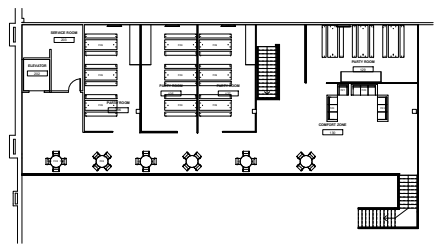
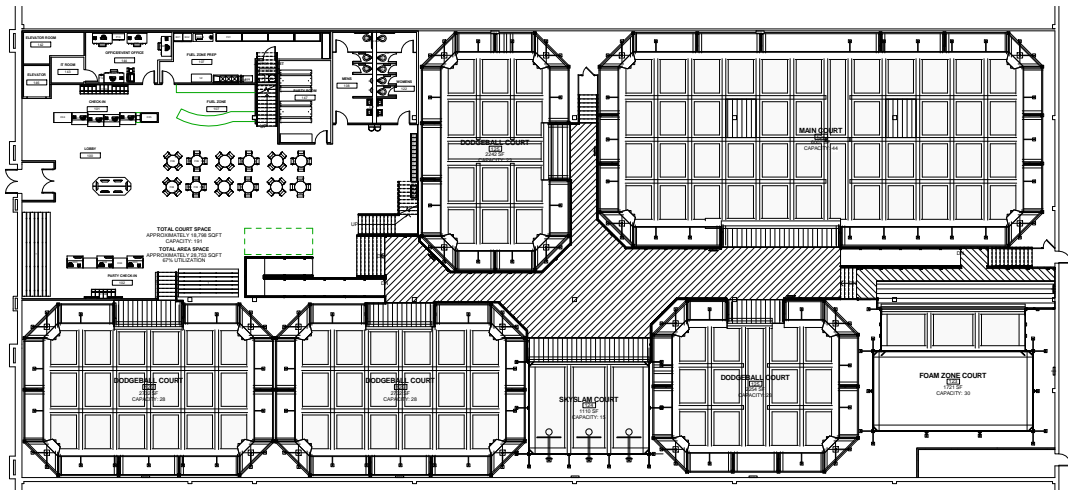




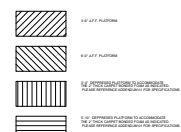
www.skyzone.com
 1201 W. 5th Street, Suite T-340
 Los Angeles, CA 90017
 T 310.734.0300 | F 310.734.0307
 Matt Lambeth
 mlambeth@skyzone.com



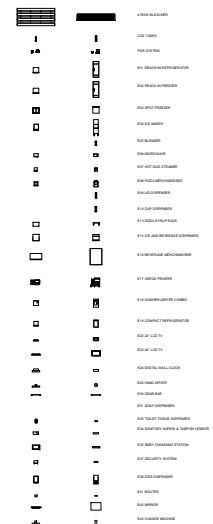
2 Mezzanine
 1" = 10'-0"



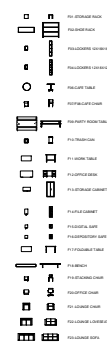
1 Ground
 1" = 10'-0"



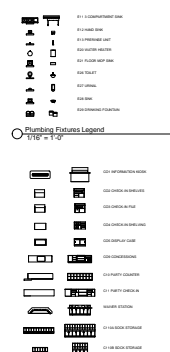
Material Legend
 1/8" = 1'-0"



Specialty Equipment Legend
 1/8" = 1'-0"



Furniture Legend
 1/8" = 1'-0"



Plumbing Fixtures Legend
 1/8" = 1'-0"

Paper Size: 36" x 48"

Orland Park, IL
Floor Plan

Overall Square Feet	28753 SF
Court Square Feet	19021 SF
Trampoline Ratio	67%
Project Number	Project Number
Date	6/11/15
Drawn By	E.Oregon
Checked By	M.Lambeth

A1.1

Scale: As indicated

6/11/2015 4:07:19 PM