

Landscape Requirements

	Existing Trees	Provided Trees	Total Trees
Western Ave:	0	4*	4
Logan Blvd:	2	3*	4

Proposed vehicular use area is less than 3,000sf. No internal landscaping required.

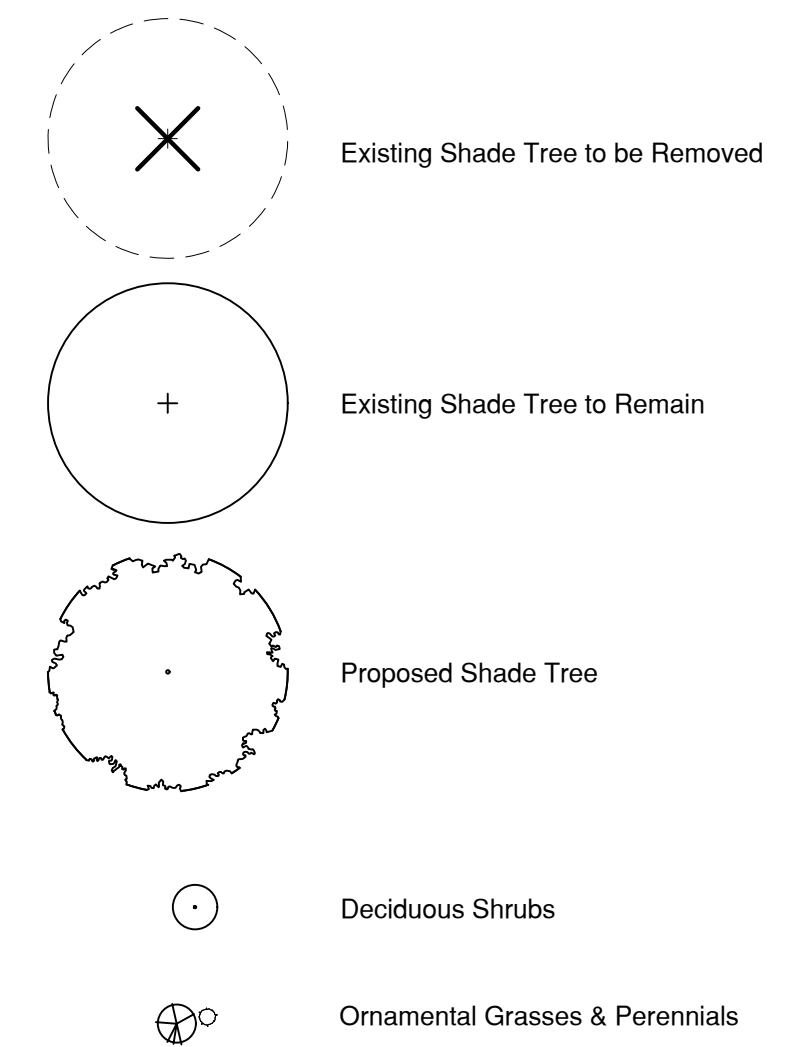
Street Trees (1 Tree / 25 linear feet)

*Provided trees are less than required trees on site due to bus stop (nearside) setback, existing tree setback, street light setback and underground utilities.

Plant List & Key

Key	Botanical Name (Common Name)	Size	Quantity
Shade Trees			
AFA	Acer freemanii 'Armstrong' (Armstrong Maple)	4"	1
QB	Quercus bicolor (Swamp White Oak)	4"	4
TD	Taxodium distichum (Common Bald Cypress)	4"	3
Deciduous Shrubs			
AMM	Aronia melanocarpa 'Morton' (Iroquois Beauty Black Chokeberry)	24"	15
Perennials & Grasses			
ASB	Allium 'Summer Beauty' (Summer Beauty Onion)	1 GAL.	38
CAK	Calamagrostis acutifolia 'Karl Foerster' (Karl Foerster Feather Reed Grass)	1 GAL.	22
SHT	Sporobolus heterolepis 'Tara' (Dwarf Prairie Dropseed)	1 GAL.	50

Plant Symbols Key



Notes

- Remove all turf encountered within bed limits and haul from site. Furnish and install 3" minimum layer of double shredded hardwood bark mulch in all planting beds and tree rings. (See Specifications)
- Fine grade, fertilize and sod all disturbed areas. (See Specifications)
- Existing tree to remain.
- Furnish and install 3" minimum layer of double shredded hardwood bark mulch. (See Specifications)
- Ornamental metal fence. See Sheet L2 Detail 5.
- Tree in expanded pit with tree grate. See sheet L3.
- Trash enclosure.
- Site triangle.
- See Sheet L2 Detail 1 for planting layout.
- See Sheet L2 Detail 2 for planting layout.
- See Sheet L2 Detail 3 for planting layout.
- See Sheet L2 Detail 4 for planting layout.
- Stop Light
- Street Light

Statements

Installation Statement

Landscape installation, pending any delays in construction, shall be completed by June 15, 2017.

Landscape Architect Statement

"The undersigned landscape architect, registered in the State of Illinois, acknowledges that the landscape planting plan and construction details shown on the attached landscape plan for the property at 1357 West 103rd Street, Chicago, Illinois has been designed, to the best of my knowledge, in accordance with the requirements of Title 10, Chapter 32 of the Chicago Municipal Code, the landscaping standards of the Chicago Zoning Ordinance, and the Guide to the Chicago Landscape Ordinance."

Maintenance Statement by Owner

"The undersigned acknowledges that the landscape planting plan shown on the attached landscape plan for the property at 1357 West 103rd Street, Chicago, Illinois has, to the best of the undersigned applicant's knowledge, been designed and will be installed, maintained, and replaced as required, by current and subsequent owners in accordance with the requirements of Title 10, Chapter 32 of the Chicago Municipal Code, the landscaping standards of the Chicago Zoning Ordinance, and the Guide to the Chicago Landscape Ordinance."

Owner Statement

"Existing parkway and on-site interior trees are to be protected while project is under construction and will be replaced by current and subsequent owner if damaged."



Issues & Revisions	Date	Description	Issue for Permit
1	02/26/16		